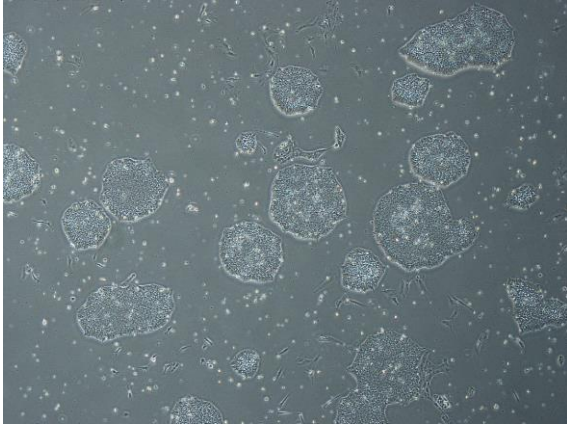
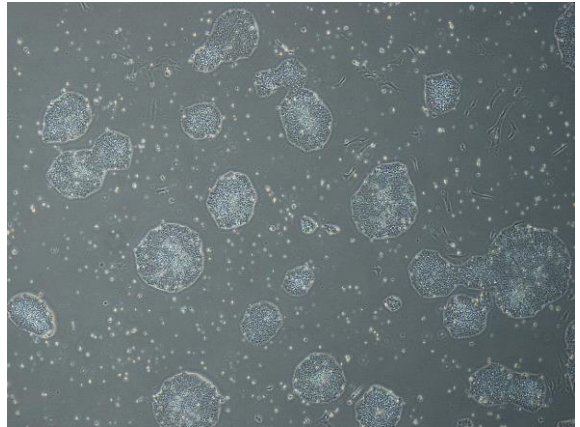


【 CiRA-j-1557 】 Morphology of iPSC colonies

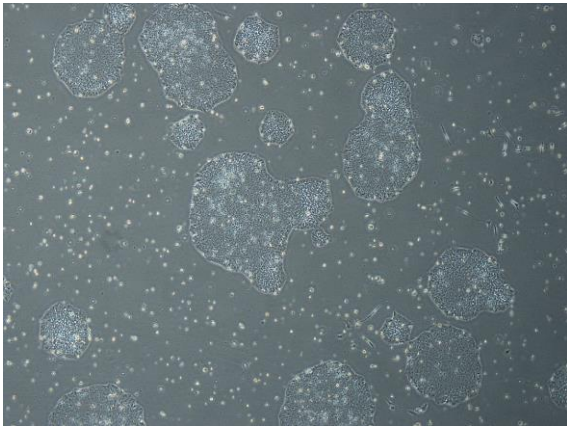
CiRA-j-1557-A: passage-2



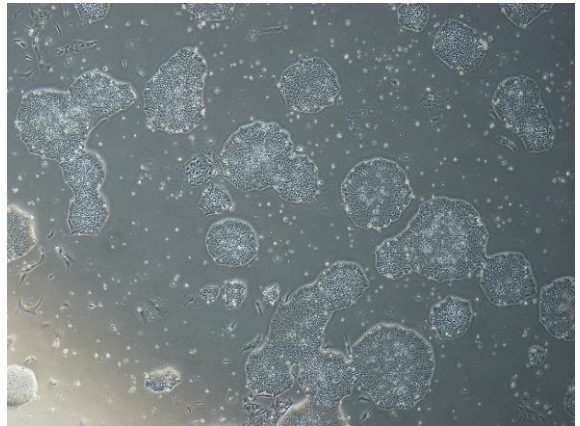
CiRA-j-1557-B: passage-2



CiRA-j-1557-C: passage-2



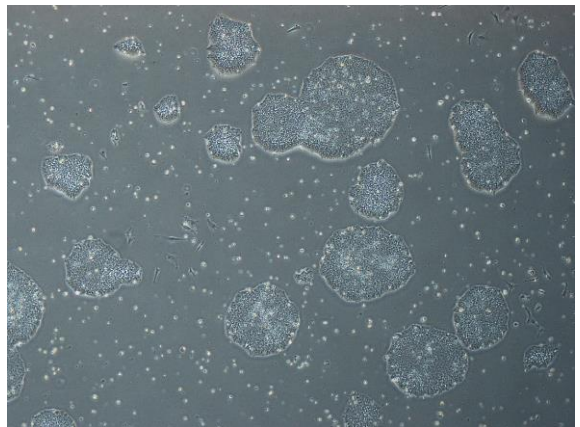
CiRA-j-1557-D: passage-2



CiRA-j-1557-E: passage-2



CiRA-j-1557-F: passage-2



(All images were captured at 4x magnification)